

## Training package configuration

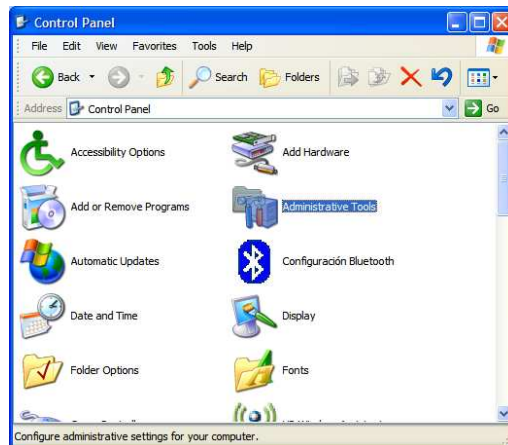
The self-training package consists of a complete set of sample reports, charts and dashboards, in order to setup the package two MS Access Databases and one MS Excel file will need to be configured. This package works in a MS Windows environment with MS Office installed.

In order to configure the package you will just need to create three ODBC entries, see below:

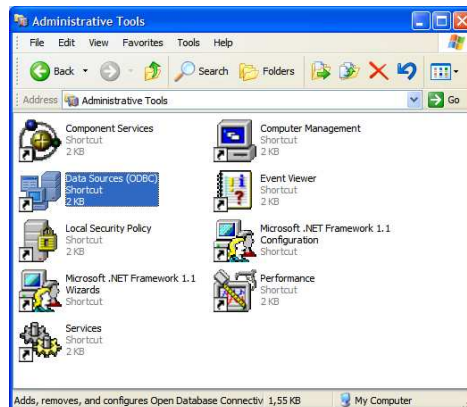
1. Create a MS Access ODBC entry named “ESOFTEASY\_ESF” pointing to the file “esf.mdb” file that you can find in the following folder of the package: “\eSoftEasy\_PRD\_2.0\_TRPACK\tomcat-4.1.31\webapps\esf”
2. Create a MS Access ODBC entry named “TRAINING\_DB\_ESF” pointing to the file “training\_db.mdb” file that you can find in the following folder of the package: “\eSoftEasy\_PRD\_2.0\_TRPACK\tomcat-4.1.31\webapps\esf”
3. Create a MS Excel ODBC entry named “TRAINING\_XLS\_ESF” pointing to the file “excelresults.xls” file that you can find in the following folder of the package: “\eSoftEasy\_PRD\_2.0\_TRPACK\tomcat-4.1.31\webapps\esf”

In order to setup each one of the ODBC entries use the following screens (these are just sample screens from Windows XP, for any other Windows version the screens might slightly change):

1. Go to the “Control Panel” screen.



2. Go to “Administrative Tools” screen.



3. Go to “Data Sources (ODBC)” screen and pick the “System DSN” tab. In order to start creating the ODBC entries click in the “Add” button of the screen (see screen below).

