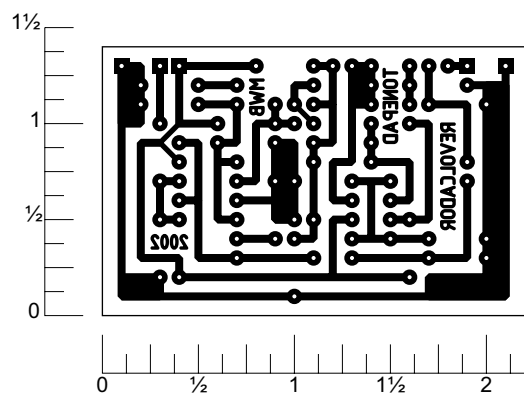
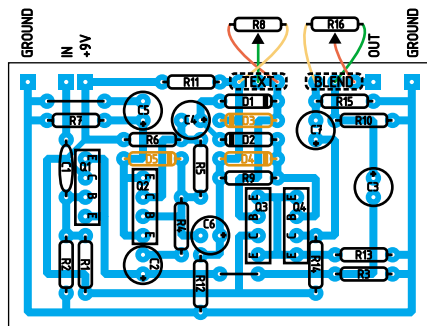


This circuit is a workalike of the über-rare Ampeg Scrambler distortion/octave pedal. Jacks and bypass switch are not shown on the layout. Diodes marked in **orange** are on the factory schematic, but are supposedly not on actual units. Any registered trademarks remain the property of their owners. Visit tonepad.com for more information on this project.



READY TO TRANSFER

Part values in **orange** are those originally specified in factory schematic

RESISTORS

R1, R2 – 1M

R3, R6, R13 – 4k7

R4 – 2k2

R5 – 470k

R7 – 220

R8 – 10k linear pot

R9 – 8k2

R10, R15 – 47k

R11, R12 – 220k

R14 – 1k

R16 – 47k or **50k** linear pot

CAPACITORS

C1 – 10nF

C2, C4, C6 – 4u7 or **5uF** electro

C3, C7 – 1uF electro

C5 – 100uF to **125uF** electro

SEMICONDUCTORS

Q1, Q3, Q4 – High-gain darlington (**2N5306**, MPSA14, etc)

Q2 – Medium-gain NPN (**BC169B**, 2N3904, etc)

D1 - D5 – Silicon diode (**1N456**, 1N4148, etc)

Layout and presentation by Matthew Burnside 2002©.
All rights reserved. Authorization for personal use only.
Free units maximum. Any commercial use is forbidden.
Permission for posting/serving limited to
<http://www.tonepad.com>
Redistribution or retransmission expressly prohibited.

