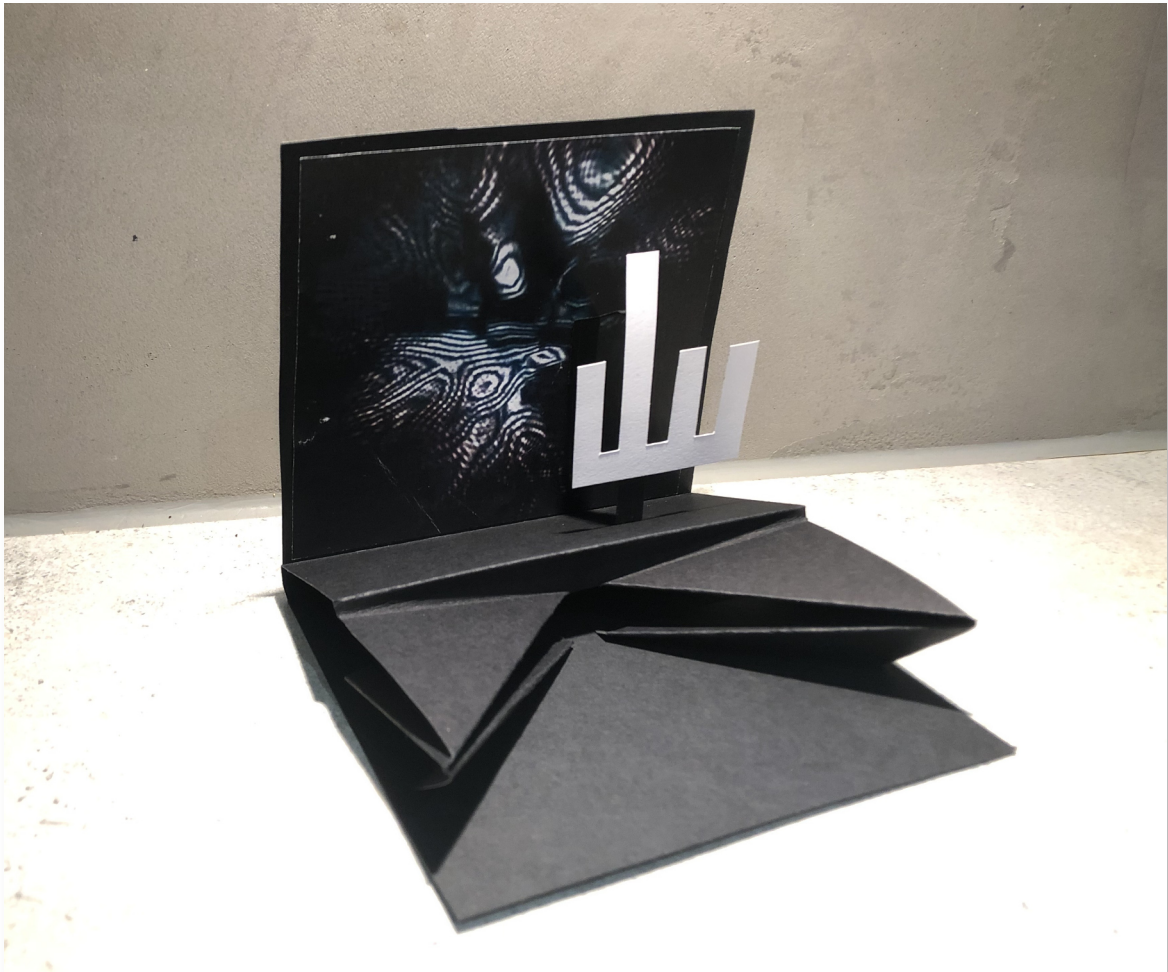


FLOPPYFORM



**A LUXURY FOLDTASTIC SLEEVE FOR
YOUR 5 1/4 INCH FLOPPY DISKS**

by

KEWLERS PRODUCTS & MANUFACTURING GROUP

You have the right to remain silent. Anything you say can be used against you in court. You have the right to talk to a lawyer for advice before we ask you any questions. You have the right to have a lawyer with you during questioning. If you cannot afford a lawyer, one will be appointed for you before any questioning if you wish. If you decide to answer questions now without a lawyer present, you have the right to stop answering at any time. Greetings to elites, fuckings to lamers.

Kewlers Products & Manufacturing Group is not affiliated with advisory, auditing or accounting services. Nevermind taking account of any similarity with companies that may exist outside the demoscene bubble.

No rights reserved, besides The Finger logo (tm). Any inspiration with existing brands and products is highly intentional. No floppy disks were harmed during the development of Floppyform. Kewlers 2022.

FLOPPYFORM CRAFTING INSTRUCTIONS

- Use cardstock or similar thick hobby / crafting paper for both the cover and tray. Regular printing paper is not strong enough for the tray mechanism to work well.
- Print both the cover and tray template on paper. These are needed to transfer fold & trim guides to the cardstock.
- Secure templates on pieces of crafting paper using a tape that will not excessively damage the cardstock upon removal.
- Cut slits along the exterior red lines, outside and all the way to black edges. These will help to line up esp. the wide folds.
- Cut slits on each change of angle (corners etc) to have guide points for trimming to final shape.
- Double check that every fold slit and corner have been cut. You need to be able to cut to the final shape with templates removed.
- Remove templates and fold cardstock using the slits as guide. Lining up the slits against a sharp edge like a ruler or tabletop and, then making the fold, will help keep the folds straight.
- Use either double-side tape or glue to fasten tray to inside of cover. The long top edge fold needs to go above either centerfold line up on the inside of cover.
- Folded flaps should extend inward over the remaining centerfold. If ends of flaps don't line up with the remaining center fold, cut away any excess cardstock that prevents closing the cover.
- Flaps are best of affixed with the glue side facing up. Once glue has been applied, press the cover against flaps to affix the two.
- You can use the template pages as a starting point to design custom graphics prints to glue on top of cardstock.

COVER TEMPLATE

Line up top edge of tray above either fold here, with the
template texts against one another.

GLUE ALONG FOLD

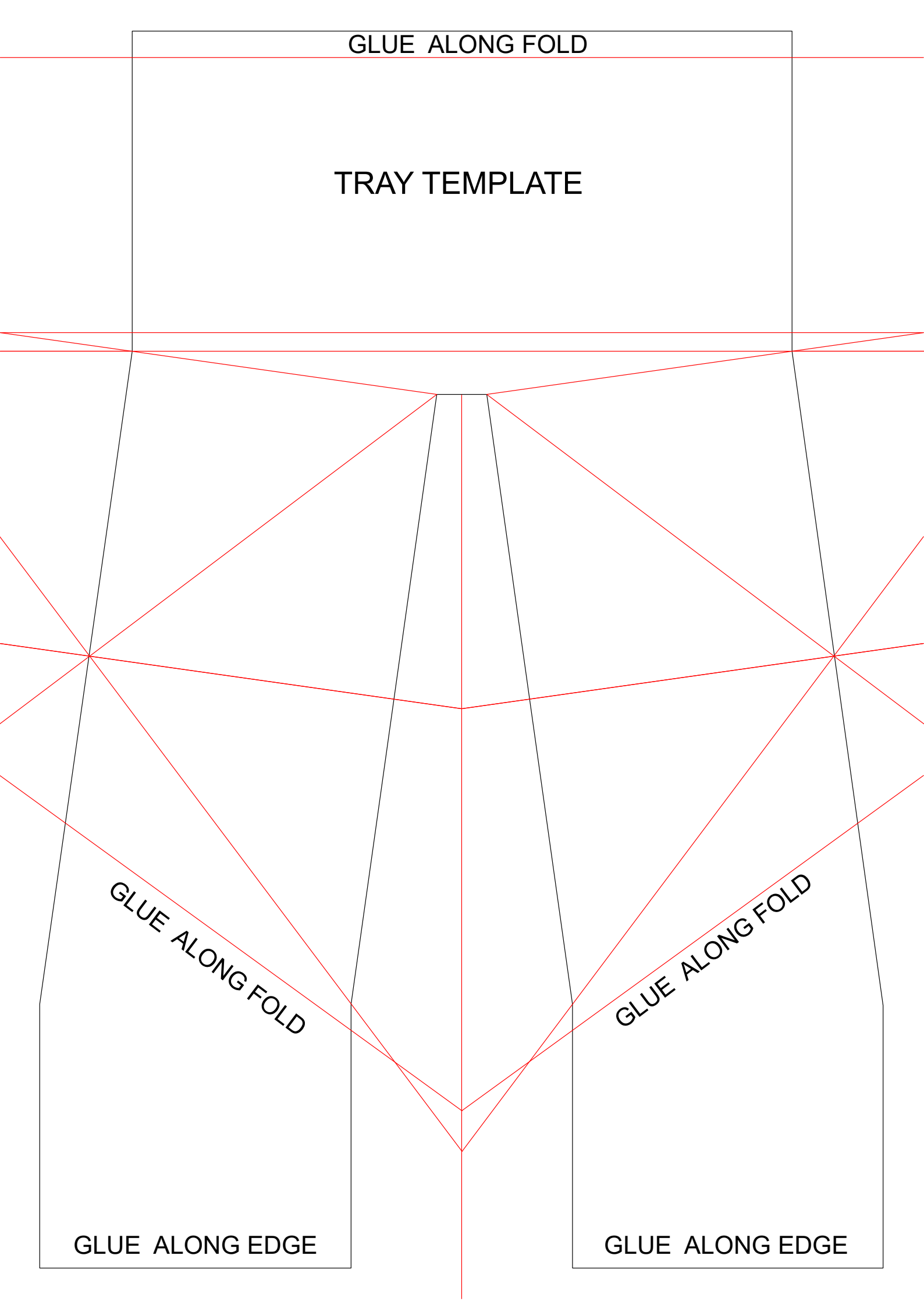
TRAY TEMPLATE

GLUE ALONG FOLD

GLUE ALONG FOLD

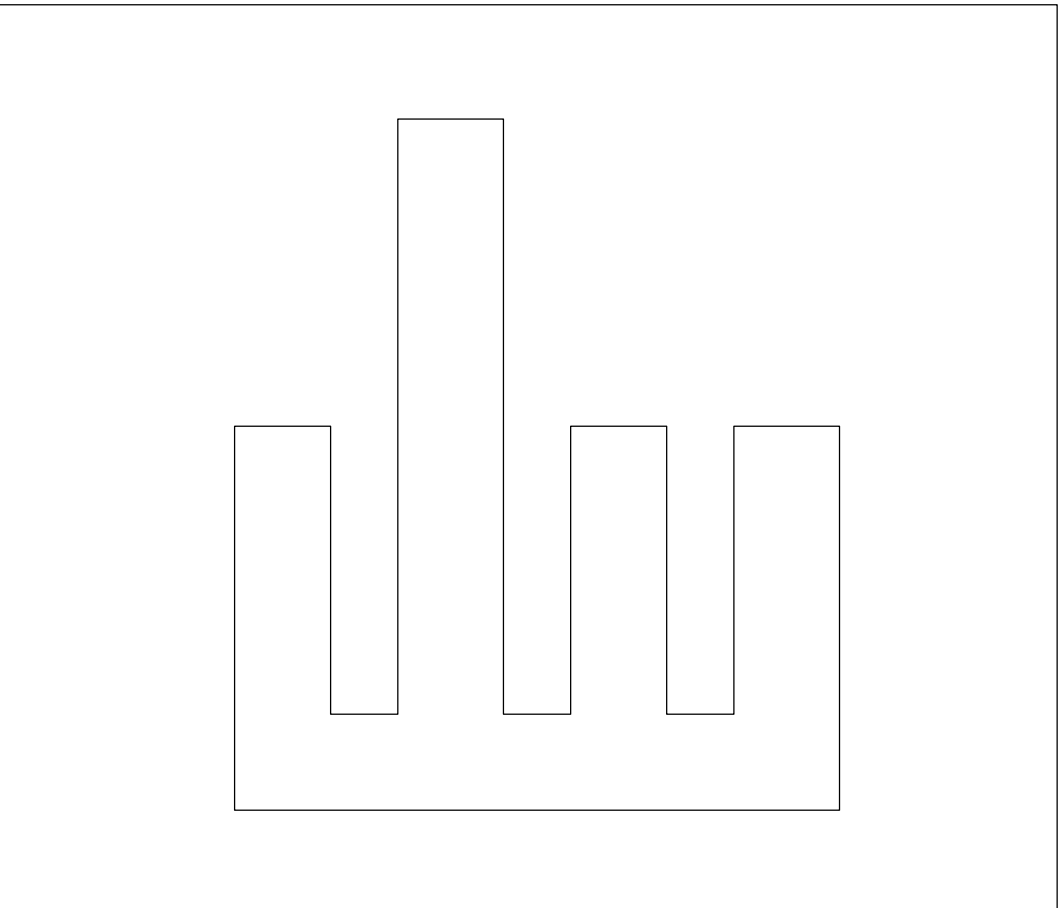
GLUE ALONG EDGE

GLUE ALONG EDGE



ART TEMPLATE

Above tray



Under tray (half cover full size)

