

Vine Server™

USER MANUAL 3.0



Copyright 2007 Redstone Software, Inc.
Vine Server User Manual

Trademarks

Vine, Vine Viewer Vine Server, the Vine logo, Redstone, the Redstone logo, and OSXvnc are trademarks or registered trademarks of Redstone Software, Inc.

Vine Viewer User Manual is a copyright of Redstone Software, Inc.

Apple, Apple Remote Desktop, Bonjour, Mac, Mac OS, Macintosh, and Quicktime are trademarks or registered trademarks of Apple Computer, Inc.

CONTENTS

Preface	5
About Vine Server	5
Enhanced Functionality with Vine Viewer	5
System Requirements	6
Installation	6
Help and Additional Information	6
Introduction to Virtual Network Computing (VNC)	7
How VNC Works	7
 Chapter 1: Servers	8
The Server Window	8
Connection Information	8
Server Controls	9
System Servers	10
Starting a System Server	10
Multiple Desktop Servers	11
Using Vine Server in Each User Account: Step-by-Step	11
Server Logs	11
 Chapter 2: VNC Connections	12
VNC Connections through Firewalls and Routers	12
Opening a VNC Port in Mac OS 10.5 (Leopard)	12
Opening a VNC Port in Mac OS X (10.3 and 10.4): Step-by-Step	13
Opening a VNC Port in a Router (Port Forwarding)	13
Port Forwarding: General Instructions	14
SSH Connections	15
Enabling Remote Login (SSH) in the Mac OS X Firewall: Step-by-Step	15

Enabling SSH (Port 22) in a Router	15
Reverse Connections	16
Preparing a VNC Viewer for Reverse Connections: Step-by-Step	16
Opening a Reverse Connection: Step-by-Step	16
 Chapter 3: Vine Server Preferences	17
Connection Preferences	17
Information	18
Authentication	18
Device Preferences	19
Display	19
Swap mouse buttons 2 and 3.....	19
Keyboard Layout.....	19
Keyboard Events	20
Sharing Preferences	21
Server Sharing.....	21
Startup Preferences	23
Advanced Preferences	24
RFB Protocol	24
Command Line Arguments.....	24
 Appendix: Command Line Arguments	25

PREFACE

This preface contains:

- A background and feature list of Vine Server
- System requirements and installation instructions
- Information about Vine Viewer, the companion VNC viewer to Vine Server
- Help resources
- An Introduction to Virtual Network Computing (VNC)

About Vine Server

Vine Server, previously released as OSXvnc, is a free, open-source VNC server from Redstone Software, Inc.

- Vine Server offers a rich and unique feature set among Mac OS X VNC servers:
- Flexible port assignment for multiple VNC servers on a single computer
- System servers that run independently of user accounts
- Outstanding clipboard sharing; Exchange of rich text, images, files, and applications with Vine Viewer

Enhanced Functionality with Vine Viewer

Inspired by over 800,000 downloads of Vine Server, Redstone now offers Vine Viewer, a premium VNC viewer for Mac OS X.

Vine Viewer and Vine Server together bring a new level of control to VNC. Using the Vine combination adds:

- Rich clipboard sharing: Cut and paste exchange of rich text, files, and applications between Vine Server and Vine Viewer.
- Bonjour™ networking technology for effortless local connections

Additional Features of Vine Viewer

- QuickTime™ movie recording
- Secure connections through SSH
- Remote window scaling
- A simple, highly intuitive interface
- Clipboard exchange of rich text, images, files, and applications with Vine Server

To learn more or purchase Vine Viewer, visit [the Vine Viewer page at Redstone Software](#).

System Requirements

Macintosh computer, PPC or Intel
Mac OS X v.10.3.9 or later

Installation

- 1 Locate the Vine Server icon on your desktop.
- 2 In the Finder, move Vine Server to the Applications folder.
- 3 Double-click the Vine Server icon.

Help and Additional Information

There are two ways to locate this document for future reference:

- Go to [the documentation page at Redstone Software](#). Download Vine Server User Manual.
- In the Vine Server application, choose Help > Vine Help.

For Vine Server updates, news, discussion forums, and all available support resources, please visit [Redstone Support](#).

Important Notice: Network Security and Proper Functioning

In this manual and other publications, Redstone provides some basic information about network management. Please consider this information a starting point for your further research, and do not make any changes to your network without a clear understanding of your networking software and devices.

Individual networks vary greatly, and Redstone cannot provide advice or instructions pertaining to your unique set-up. For more specific information about the networking and security products you are using, please refer to their documentation or technical support.

Introduction to Virtual Network Computing (VNC)

The foundation of Vine Server is Virtual Network Computing (VNC). VNC is a technology that allows you to use the computer right in front of you to control a computer on the other side of the room, or the other side of the world.

VNC is not limited to a particular computer or operating system. It is available for virtually any computer, as well as devices such as cell phones and PDA's. (This manual discusses computers for the sake of simplicity.)

VNC can provide a wealth of benefits in many areas: Helpdesk, education, remote system administration, telecommuting, and family technical support, to name a few.

How VNC Works

To use VNC, you need three things:

- 1 **VNC Server.** The computer you intend to control remotely must be running a VNC server. (The VNC server must have granted you permission to use it.)
- 2 **VNC Viewer.** The computer you use to remotely control a VNC server must be running a VNC viewer.
- 3 **A Network Connection.** The VNC server and VNC viewer must be able to exchange information over the Internet or other network.

The VNC viewer initiates a VNC connection with the VNC server. If the VNC server agrees to the connection, it begins to send back an image of its own display.

The VNC viewer opens a window that shows the VNC server display. From this window, you can use your own mouse and keyboard to interact with the VNC server as if you were sitting right in front of it.

Redstone and VNC

Redstone creates a lot of VNC enthusiasts through Eggplant automation and testing software.

To learn how Eggplant uses VNC to automate processes on any computer, please visit [the product page at Redstone Software](#).

CHAPTER 1: SERVERS

This chapter explains how to:

- [Run a desktop server](#)
- [Run a system server](#)
- [Use multiple desktop servers](#)
- [View server logs](#)

The Server Window

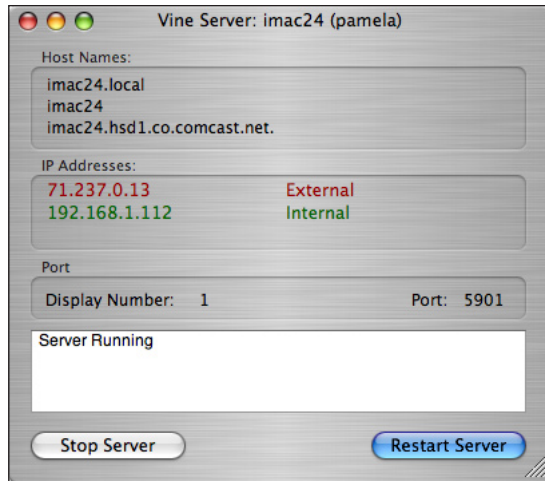
The Server window is Vine Server's primary window. It contains the connection information you need to connect to your server with a VNC viewer, as well as desktop server controls.

Connection Information

When you are setting up a VNC viewer to connect to Vine Server, you can find the following information in the Server window:

- **Host Names.** Vine Server automatically detects your computer's host names from Mac OS X System preferences.
- **IP Addresses.** You might have both internal and external IP addresses.
For a VNC viewer on your local network, enter an **internal** IP address.
For a VNC viewer outside your local network, enter an **external** IP address.
- **Port.** This is the port on which Vine Server listens for VNC connections. (The display number is just the last digit of your port number.)

You can change your port number (and display number) in Connection preferences.



The Server window

Server Controls

To start and stop your desktop server, click the buttons on the bottom of the Server window.

Note: If you change Vine Server preferences while a server is running, the changes do not take effect until you restart the server.

System Servers

The standard Vine Server is called a *desktop server*, because it is attached to the desktop of *your* Mac OS X user account. Whenever you are logged in to your account, you can access your own desktop through this server; even if someone is using a different account on the server computer.

By contrast, a *system server* operates at the Mac OS X system level, switching accounts as the active user changes. (If the Mac OS X login screen is active, you can log in to your user account through the system server.)

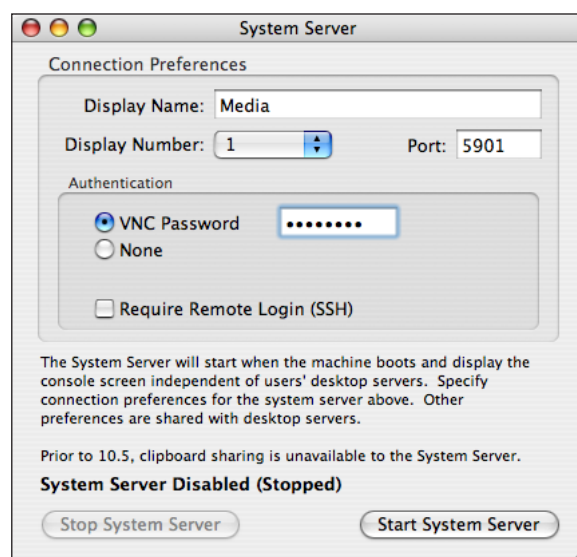
Note: On Mac OS X 10.5 (Leopard), system servers briefly stop and restart when you log in to a new user account or switch between accounts.

Starting a System Server

To start a system server, choose `Server menu > System server`.

The System Server window contains the Connection preferences that apply to your system server. For other preferences, the system server uses the standard Vine Server preference settings.

When you click the `Start System Server` button, the system server starts running. It also starts running every time you turn on the computer, until you click the `Stop System Server` button.



System server Connection preferences

Multiple Desktop Servers

If there are multiple user accounts on your computer, each user can run a desktop server to access his or her user account remotely.

Using Vine Server in Each User Account: Step-by-Step

- 1 **Turn on Fast User Switching.** Mac OS X fast user switching allows multiple users to be logged in to the computer at the same time.
 - a. Go to `System Preferences > Accounts > Login Options`.
 - b. Select "Enable fast user switching".
- 2 **Start Vine Server in each user account.**
 - a. In Connection preferences, enter a display name so you can tell your servers apart.
 - b. In Connection preferences, give each server a different display number (port).
 - c. In Startup preferences, select the "Start server when Vine Server application is launched" checkbox.
 - d. In the Server window, click the `Start Server` button.
- 3 **Make Vine Server a login item.** In the Dock, right-click the Vine Server icon, and choose `Open at Login`.

Notes

- You must be logged in to your user account to access it through Vine Server.
(If you cannot log in to your account in advance, see [System Servers](#) for information about logging in through Vine Server.)
- Peripheral devices (such as speakers or cameras) are usually controlled by the console user (the "active" account on the server computer).
- If several users are connected and working at the same time, you might notice slower performance.

Server Logs

The server log contains a list of a VNC server's technical activity in the Mac OS X Console application.

Most users do not need this information, but it can be useful to system administrators and technical support personnel.

To view a server log, choose `Server menu > Show VNC Server Log`.

CHAPTER 2: VNC CONNECTIONS

This chapter contains information on:

- [Opening VNC ports in firewalls and routers](#)
- [Enabling SSH connections](#)
- [Opening reverse connections](#)

VNC Connections through Firewalls and Routers

If you have not been running a VNC server on this computer, you might have to make these adjustments to your network before you can receive VNC connections:

- Open a VNC port in your Mac OS X internal firewall. (See below.)
- Open a VNC port in any additional devices (firewall, router) on your network. (See below.)

Opening a VNC Port in Mac OS 10.5 (Leopard)

The first time you start a VNC server, Mac OS X opens an alert dialog that asks if you want the application "OSXvnc-server" to accept incoming network connections. Click the **Allow** button.



Mac OS X alert dialog

Mac OS X allows Vine Server to accept VNC connections on any port.

Opening a VNC Port in Mac OS X (10.3 and 10.4): Step-by-Step

- 1 Log in to your computer as a system administrator.
- 2 Open Mac OS X System preferences.
- 3 Under Internet & Network, select Sharing.
- 4 In the Firewall pane, click the New button.
- 5 In the Port Name pop-up menu, choose VNC. (Choosing VNC opens ports 5900-5902. To open any other VNC port, choose Other. In the TCP Port Number(s) field, type your port number (or numbers).

Note: Apple Remote Desktop

In Mac OS X, port 5900 is assigned to Apple Remote Desktop. If Apple Remote Desktop is turned on in System Preferences, remember that port 5900 is not available to your VNC servers.

To turn off Apple Remote Desktop, select System Preferences > Sharing. In the Services pane, deselect Apple Remote Desktop.

Opening a VNC Port in a Router (Port Forwarding)

If you manage your network with a router, the router uses a single (external) IP address to conduct all of your computers' communication with the outside world. When the router receives data from outside, it needs to *forward* that data to the correct computer on the network.

Port forwarding tells the router to send any data that comes in on a given port to the computer you indicate.

Port Forwarding: General Instructions

Individual routers vary, but these steps can provide a general idea of the steps required for port forwarding.

- 1 **Go to your router configurations.** For most routers, you can find the configurations by copying your external IP address from the Vine Server window and pasting it into a web browser (as a URL).
- 2 **Find *port forwarding*.** If you don't see a port forwarding link, search your router's *Help* or *Support*. (Some routers use slightly different terms, such as *port range forwarding*, or *port mapping*.)
- 3 **Adjust the settings:**
 - **Port or Port Range.** Enter a VNC port (or ports) from 5900-5909. (Check the Vine Server window to see which port Vine is expecting you to use.)
 - **IP Address.** This refers to your computer's *internal* IP address. You can find your internal IP address in the Vine Server window.
 - **Protocol.** If there is a choice, choose *TCP*. (VNC uses the TCP protocol.)
 - **Enable.** There may be a checkbox or other control that enables and disables your VNC ports. Enable the ports to receive VNC connections.

SSH Connections

Secure Shell (SSH) is a network protocol that uses data encryption to transfer information securely.

If you are using SSH for your VNC connections, you still need to forward a VNC port, as you would for a standard connection. (See “VNC Connections through Firewalls and Routers”, above.)

In addition to forwarding a VNC port to your computer, you need to enable SSH login, which is a very similar process:

- Enable Remote Login in your Mac OS X internal firewall (See below.)
- Open port 22 in your router or external firewall. (See below.)

Enabling Remote Login (SSH) in the Mac OS X Firewall: Step-by-Step

- 1 Open Mac OS X System preferences.
- 2 In the `Internet & Network` section, select `Sharing`.
- 3 In the `Services` pane, select the `Remote Login` checkbox.

When you turn on Remote Login, the computer automatically selects `Remote Login-SSH` in the Firewall pane.

Enabling SSH (Port 22) in a Router

Enabling SSH is similar to forwarding a VNC port to your computer. The only difference is in the Port number: the SSH port is 22. (See “Port Forwarding: General Instructions”, above.)

Reverse Connections

A standard VNC connection is initiated by a VNC *viewer* contacting a VNC *server*. Vine Server can also initiate a *reverse connection*, contacting a VNC viewer and “inviting” it to open a connection.

When you offer a reverse connection to a VNC viewer, the server/viewer relationship does not change. You are not able to see or control the VNC viewer through Vine Server.

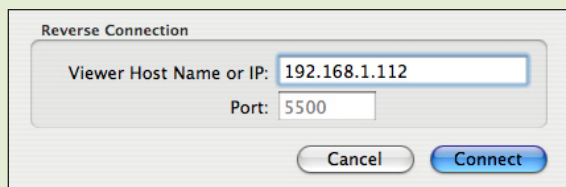
Preparing a VNC Viewer for Reverse Connections: Step-by-Step

There are three steps to take before you initiate a reverse connection to a VNC viewer:

- 1 **Turn on reverse connections.** For Vine Viewer, go to VNC preferences. Select the `Listen for Reverse Connections` checkbox. (Other VNC viewers that allow reverse connections have a similar setting.)
- 2 **Specify the reverse connection port number.** The standard port for reverse connections is 5500.
- 3 **Modify network settings.** On the computer that is running the VNC viewer, modify the firewall and/or router to allow connections on Port 5500. (See [“VNC Connections through Firewalls and Routers”](#), above.)

Opening a Reverse Connection: Step-by-Step

- 1 Choose `Server menu > Reverse Connection`.
- 2 In the `Viewer Host Name or IP` field, type in the host name or IP address of the computer that is running the VNC viewer.
- 3 In the `Port` field, type the port number on which the VNC viewer receives connections. (The standard port for reverse VNC connections is 5500.)
- 4 Click the `Connect` button.



The screenshot shows a dialog box titled "Reverse Connection". Inside, there are two text input fields. The first is labeled "Viewer Host Name or IP:" and contains the text "192.168.1.112". The second is labeled "Port:" and contains the text "5500". Below these fields are two buttons: "Cancel" and "Connect".

Reverse connections

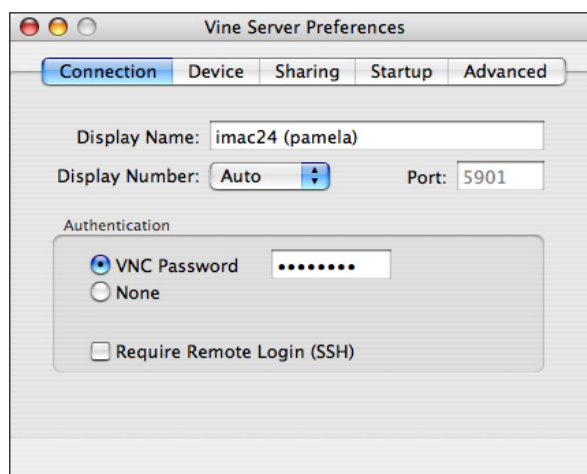
CHAPTER 3: VINE SERVER PREFERENCES

This chapter describes the five categories of Vine Server preferences:

- [Connection preferences](#)
- [Device preferences](#)
- [Sharing preferences](#)
- [Startup preferences](#)
- [Advanced preferences](#)

Connection Preferences

Connection preferences include the information a VNC viewer uses to connect to your server.



Connection Preferences

Information

These preferences allow you to change the connection information that appears in the Server window.

Display Name. An optional “nickname” to help users identify your computer.

Display Number. The last digit of your port number. When you choose a display number, your port number adjusts accordingly.

Port. The port number (5900-5909) your server uses for VNC connections.

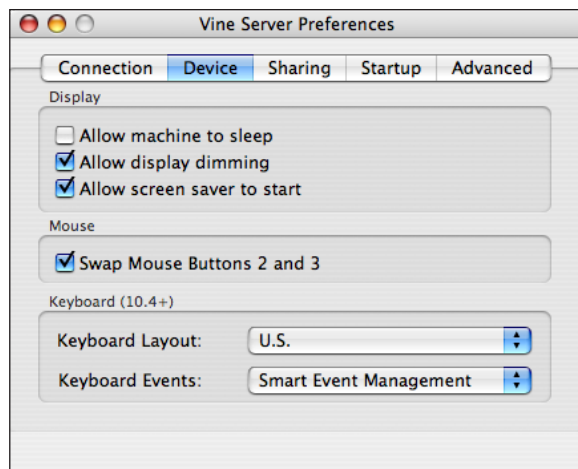
Authentication

In the Authentication box, enter a password to protect your VNC server from unwanted connections; or select *None* to run your VNC server with no password.

Require Remote Login (SSH). Select this checkbox to deny any VNC connection that does not come in through an SSH connection.

Device Preferences

Device preferences affect the way your monitor, mouse, and keyboard respond to VNC viewers.



Device preferences

Display

These preferences allow Vine Server to override Mac OS X System preferences when a viewer is connected. (They do not change the underlying System preferences.)

Allow machine to sleep. Select this checkbox to allow your computer to go to sleep when the VNC server is running. (Note: A sleeping computer cannot be awakened through a VNC viewer.)

Allow display dimming. Select this checkbox to allow your display to dim when it normally would.

Allow screen saver to start. Select this checkbox to allow your screen saver to turn on when it normally would. (Note: The constant movement of screen savers can slow down your network performance.)

Swap mouse buttons 2 and 3

This checkbox is selected by default. Most VNC viewers (including Vine Viewer) consider the positions of mouse buttons 2 and mouse 3 to be reversed with respect to the Mac OS X operating system.

Deselect this checkbox if you are using a VNC viewer that interprets mouse buttons in the same order as Mac OS X (such as Apple Remote Desktop).

Keyboard Layout

This pop-up menu allows you to choose the keyboard layout that Vine Server uses when it interprets keystrokes from a VNC viewer:

- **U.S. Keyboard** assumes a standard American keyboard layout.
- **Unicode Hex Input** is usually the best choice when your server is going to host several viewers with different international keyboards. To use this keyboard layout, you must make *Unicode Hex Input* your computer's current input source. (In System preferences, select *International*. In the *Input Menu* pane, select the *Unicode Hex Input* checkbox.)
- **Current Keyboard** loads the keyboard layout that your computer is using when you start the VNC server. (If you change your computer's keyboard layout while a server is running, you must restart the server to load the new layout.)

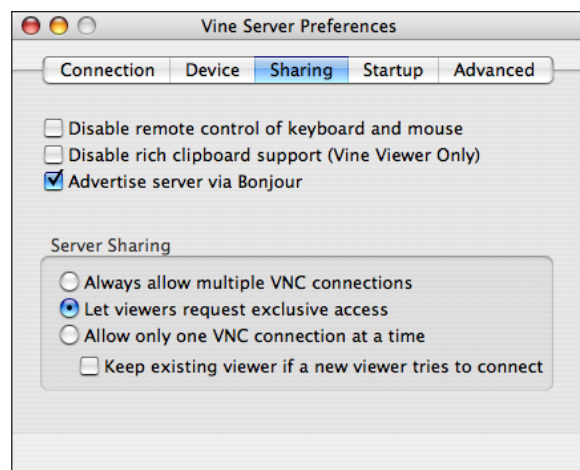
Keyboard Events

This pop-up menu allows you to choose the level at which Vine Server interprets keyboard input from a VNC viewer:

- **Hardware Events.** This is usually the best choice if you are the only person on your computer. (In some applications, there are actions that are triggered by the keyboard state. *Hardware events* can produce these actions, because they are treated as actual keystrokes on your own keyboard.)
- **User Session Events.** This is usually the best choice if you are connecting to Vine Server while someone else is using your computer. (If the computer receives your keystrokes and another user's keystrokes at the same time, the combination can trigger unwanted actions. *User session events* prevent these errors because they are not considered keystrokes.)
- **Smart Event Management.** This is usually the best choice if you are sometimes connected as the console user and sometimes as a secondary user. (When you are the console user, your keyboard input is considered a hardware event; when you are a secondary user, it is considered a user session event.)

Sharing Preferences

Sharing preferences govern the number of simultaneous connections your VNC server allows, and the degree of control you allow VNC viewers.



Sharing Preferences

Disable remote control of keyboard and mouse. Select this checkbox to disable remote control of Vine Server. (VNC viewers are still able to connect to Vine Server and see the display.)

Disable rich clipboard support (Vine Viewer only). The rich clipboard available between Vine Server and Vine Viewer allows the cut-and-paste exchange of rich text, images, files, and applications. Select this checkbox to allow only a standard plain text clipboard between Vine Server and Vine Viewer.

Advertise server via Bonjour. Select this checkbox to make your VNC server's availability known to VNC viewers on your local network. These VNC viewers automatically receive your VNC server's port and host name or IP address, but they still need to enter your password to open a VNC connection.

Server Sharing

This preference determines whether you allow single or multiple simultaneous VNC connections.

Always allow multiple VNC connections. Select this option to allow multiple VNC viewers to connect to the VNC server at once.

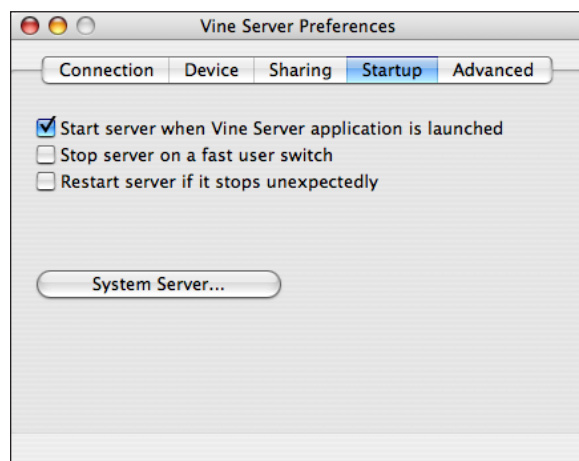
Let viewers request exclusive access. Select this option to give VNC viewers the opportunity to request exclusive access to your server. (If you have chosen to keep the existing viewers when a new viewer connects, a new viewer that requests exclusive access is denied.)

Allow Only One VNC Connection at a Time. Select this option to allow only one VNC viewer at a time to connect to your server.

Keep existing viewer if a new viewer tries to connect. This preference determines which VNC connection is kept when you are allowing only one connection. Select this checkbox to keep the first viewer that connected; deselect this checkbox to close the first connection in favor of a new connection.

Startup Preferences

Startup preferences control the conditions under which Vine Server automatically starts and stops running.



Startup Preferences

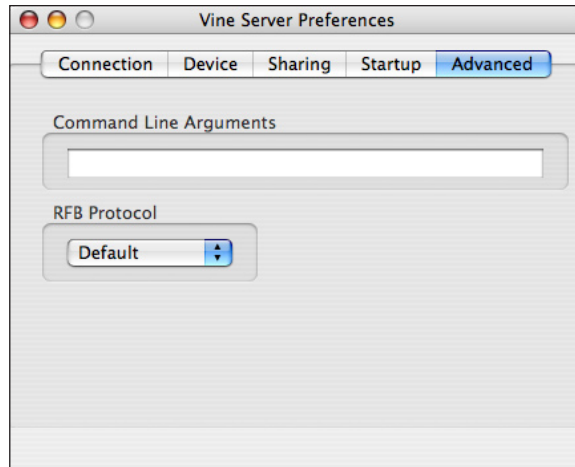
- **Start server when Vine Server application is launched.** Select this checkbox to start running your VNC server automatically whenever you launch the Vine Server application.

Note: System servers always start running when you start up your computer, whether the Vine Server application is launched or not.

- **Stop server on a fast user switch.** Select this checkbox to stop your VNC server when another Mac OS X user account is activated. For more information on Fast User Switching, see "Multiple Desktop Sessions" in Chapter 2: Using Vine Server.
- **Restart server if it stops unexpectedly.** Select this checkbox to automatically restart your VNC server if it stops running due to an unexpected error.

Advanced Preferences

Advanced preferences are not required for standard Vine Server usage. They may be useful to advanced users, and in rare troubleshooting situations.



Advanced preferences

RFB Protocol

Remote framebuffer (RFB) is a communication protocol used by VNC. Most VNC viewers use the most recent version of RFB, 3.8.

If you are connecting to an older VNC viewer that does not support RFB 3.8, choose 3.7 or 3.3 in the `RFB Protocol` menu.

Command Line Arguments

In the `Command Line Arguments` text field, advanced users can enter certain exceptional commands. For a list of supported commands, see [Appendix A: Command Line Arguments](#).

APPENDIX: COMMAND LINE ARGUMENTS

This appendix contains a list of arguments that can be used in Vine Server's underlying command line application.

Argument	Description
-rfbnoauth	Run the server with no password protection
-maxauthattempts num	Maximum number of authentication attempts before denying access (default value is 5; A value of 0 allows infinite attempts.)
-rfbport port	TCP port for RFB protocol (0=autodetect first open port 5900-5909.)
-rfbwait time	Max time in ms to wait for RFB client.
-rfbauth passwd-file	Use authentication on RFB protocol. (Use 'storepasswd' to create a password file.)
-deferupdate time	Time in ms to defer updates (default 40.)
-desktop name	VNC desktop name (default "MacOS X".)
-alwaysshared	Always treat new clients as shared.
-nevershared	Never treat new clients as shared.
-dontdisconnect	Don't disconnect existing clients when a new non-shared connection comes in (refuse new connection instead.)
-nodimming	Never allow the display to dim. (Default: display can dim, input undims.)
-maxdepth bits	Maximum allowed bit depth for connecting clients. (Default: bit depth of display.)
-allowsleep	Allow machine to sleep. (Default: sleep is disabled.)

Argument	Description
-disableScreenSaver	Disable screen saver while users are connected. (Default: no, allow screen saver to engage.)
-swapButtons	Swap mouse buttons 2 & 3. (Default: yes.)
-dontswapButtons	Disable swap mouse buttons 2 & 3. (default: no.)
-disableRemoteEvents	Ignore remote keyboard, mouse, and clipboard event. (Default: no, process them.)
-connectHost host	Host Name or IP of listening client to establishing a reverse connection.
-connectPort port	TCP port of listening client to establishing a reverse connection. (Default: 5500.)
-noupsdates	Prevent registering for screen updates, for use with x2vnc or win2vnc.
-protocol protocol	Force a particular protocol version (eg 3.3.) (Default:RFB 003.008.)
-bigEndian	Force Big-Endian mode (PPC.) (Default: detect.)
-littleEndian	Force Little-Endian mode (INTEL.) (Default: detect.)
-localhost	If you use SSH and want to stop non-SSH connections from any other hosts. (Default: no, allow remote connections.)
-restartonuserswitch flag	For use on Panther 10.3 systems; this will cause the server to restart when a Fast User Switch occurs. (Default: no.)
JAGUAR BUNDLE OPTIONS (10.2+):	
-keyboardLoading flag	This BETA feature allows OSXvnc to look at the user's selected keyboard and map keystrokes using it. Disabling this returns OSXvnc to standard (U.S. Keyboard,) which may work better with Dead Keys. (Default: no)
-pressModsForKeys flag	If Vine Server finds the key you want, it temporarily toggles the modifier keys to produce it. (This flag works well if you have different keyboards on the local and remote machines.) (Default: no) Only works if -keyboardLoading is on.
-rendezvous flag	Allow Vine Server to advertise VNC server using Rendezvous discovery services. 'VNC' enable the service named VNC (For Eggplant & Chicken 2.02b.) 'Both' or '2' enables the services named RFB and VNC. (Default: RFB:YES VNC:NO)
-ipv4	Listen for connections on IPv4 ONLY. (Default: Off)
-ipv6	Listen for connections on IPv6 ONLY. (Default: Off)