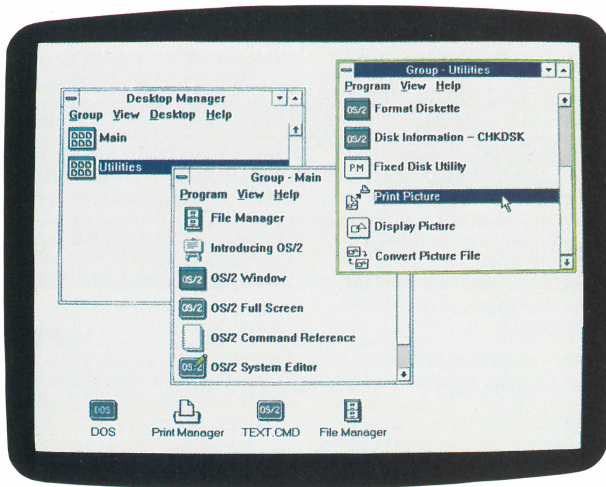


IBM Operating System/2 Standard Edition Version 1.2



Desktop Manager lets you organize your applications and data according to your needs—all within a powerful, consistent environment.

Advanced computing power plus ease of use

Now it's easier to run multitasking applications—and develop them, too—with IBM Operating System/2™ Version 1.2, IBM's advanced operating system for the Personal System/2.®

With IBM OS/2® SE Version 1.2, users benefit from an easy-to-use graphical interface, support for multiple concurrent applications, and large memory addressability. And because OS/2 SE includes a variety of IBM programming languages and tools, developers will be able to work more productively as well.

IBM OS/2 SE Version 1.2 helps you make the most of the capabilities of the 80286, 80386™ or i486™ processors in your IBM personal systems. It not only brings you the benefits of large memory and multitasking support, it also offers windowing and graphics capabilities for improved ease of use.

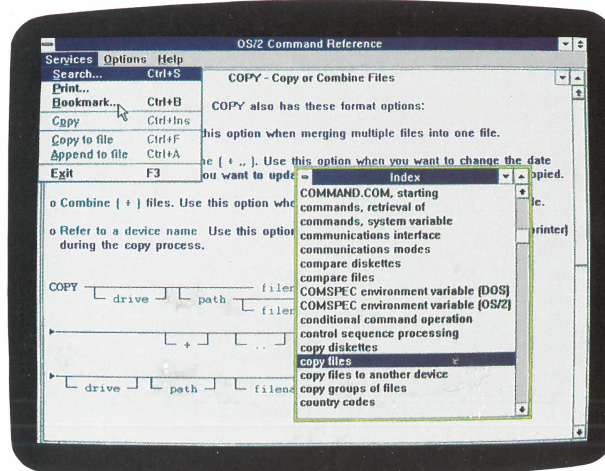


Make the move to software and hardware consistency. Operating System/2 Standard Edition implements elements of IBM's Systems Application Architecture™ (SAA™) and SAA's Common User Access (CUA) feature. Designed to bring together IBM System/370,™ AS/400™ and Personal System/2 environments, SAA provides consistent interfaces for communications, programming—even for end users. And the CUA feature furnishes common guidelines for developing easy-to-use OS/2 Presentation Manager™ applications.

What this means is that OS/2 offers common function keys, Help options, terminology, menus and screen appearance. So there's less to learn when moving from one type of program to another.

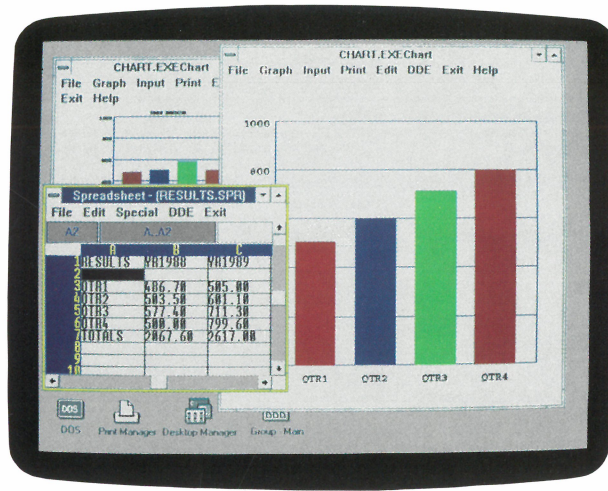
View many windows at one time. When you're working with several programs, you don't have to stop and save one before retrieving another. Just create as many OS/2 windows as you need, in any size, and view them concurrently—even transfer data among them. It's all possible thanks to the high-function Presentation Manager built into OS/2 Standard Edition Version 1.2.

There's more. Because OS/2 supports up to 16Mb of real memory, you can run larger, complex programs concurrently—and reliably.



The Online Command Reference facility provides a summary of all the commands available to you—even while you perform other tasks.

OS/2 Presentation Manager allows you to display multiple applications concurrently—and move data among them.



Highlights

IBM Operating System/2 Standard Edition Version 1.2 provides a wide range of functions, programming interfaces and tools. A great variety of programming languages is also available for OS/2. Here are just some of the ways these OS/2 elements can work for you:

Functions

Desktop Manager makes it easier to start up and add programs. Even DOS programs may now be started directly from the Desktop Manager.

File Manager combines enhanced iconic representations with text, helping users to identify and manipulate a variety of files quickly and easily.

Direct manipulation features now distinguish both Desktop Manager and File Manager. As a result, you can select a file from either of these managers, "drag" it to another group, and drop it there—or even print it out.

DOS compatibility mode allows you to run most of the existing DOS-based programs you already own—including files larger than DOS's 32Mb size limit. What's more, the OS/2 SE DOS environment supports some of the easy-to-use text mode displays and video modes available in DOS 4.0. And because you can access DOS from either Desktop Manager or File Manager, you can move from OS/2 to the DOS environment with ease.

Dual boot capability gives you the option of booting either OS/2 Standard Edition Version 1.2 or DOS from the same fixed disk drive. All you have to do is run the BOOT utility—under OS/2 SE, the OS/2 DOS compatibility mode, or DOS. This gives you an alternative method of running DOS programs—and can help you move smoothly to the OS/2 environment.

High-Performance File System speeds access to fixed disk partitions as large as 2 gigabytes—and handles files of that size as well.

Consistent application management allows you to run multiple applications concurrently and view them all on the screen.

Online Command Reference provides immediate access to OS/2 documentation—even while you're running other applications.

80286/386/i486 architecture support helps you create and run sophisticated applications that take advantage of IBM hardware built with 80286, 80386 and i486 microprocessors. For example, it enables you to run applications both concurrently and independently.

16Mb real memory addressability lets you develop and run very large applications, including bit-mapped graphics, online documentation, large data requirements, and high-level functions. In the event that multiple operations exceed real memory, additional virtual memory is available on demand.

Memory management and multitasking capabilities allow you to perform many operations simultaneously so you can use your time efficiently.

Programming interfaces

OS/2 Standard Edition Version 1.2 incorporates a set of consistent programming interfaces to help increase productivity and simplify the process of writing new applications. Since the programming interfaces contain hundreds of functions, development time is sharply reduced—and so is migration from existing DOS applications. Programming interfaces provided with OS/2 Standard Edition Version 1.2 include:

Presentation interface gives you access to fonts and graphics data and windowing control—and conforms to the Common User Access guidelines of Systems Application Architecture.

Video input/output interface helps programmers create simple text displays.

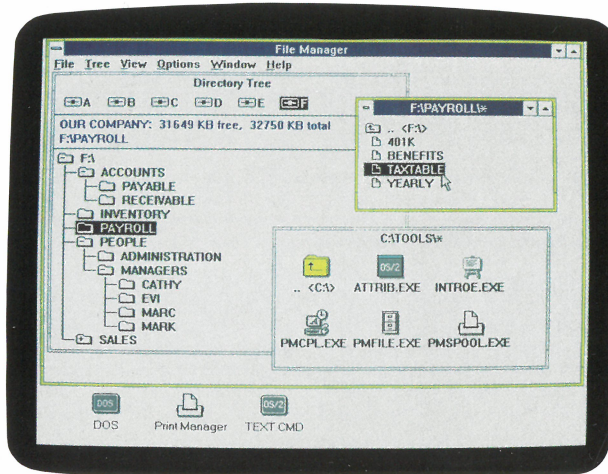
Interprocess communication interface permits intertask synchronization and communication among different applications.

Memory and task management interfaces provide the capabilities to build high-function, multitasking applications.

Device independence automatically adjusts applications for different printers, plotters or displays. Several popular device drivers are included with OS/2 Standard Edition Version 1.2.

Programming languages and tools

Whether you want to design a spreadsheet with sophisticated graphics, build a model, or create a data base, there's an IBM programming language suited to the task—and supported by OS/2. The range of languages you can work with includes:



The icons and directory trees in OS/2's File Manager make it easy to access and manipulate your files and data.

IBM C/2 Version 1.10, a full-function language with new enhancements for the OS/2 Presentation Manager environment.

IBM COBOL/2 for business applications with access to OS/2 functions and support for multiple memory models.

IBM FORTRAN/2 Version 1.02 for scientific and engineering applications in a multitasking environment.

IBM Macro Assembler/2 for improved application performance and concurrent operation of applications.

IBM Pascal Compiler/2 for creating and executing Pascal programs in the OS/2 environment. The compiler provides structured programming facilities and extensive data structures.



OS/2's user friendly graphical interface can boost office productivity by reducing training time.

IBM BASIC Compiler/2 for writing, testing and running BASIC programs under OS/2.

IBM C/2 1.10, COBOL/2, FORTRAN/2 1.02, and Macro Assembler/2 can be used right now to build easy-to-use graphics applications that run in the Presentation Manager environment.

The IBM Operating System/2 Programming Tools and Information Version 1.2 is separately available to help boost your productivity in developing applications for the OS/2 environment. Highlights of this optional programming toolkit include:

Dialog Manager, including menu-based programming aids and a Dialog Tag Language compiler.

IBM Operating System/2 Standard Edition 1.2 features

Feature	Function	End-user Benefit
Desktop Manager	Provides a simple way to start both OS/2 and DOS programs and arrange work with an optional iconic view	End users can work more productively and can easily see what operations are available
Information Presentation Facility	Simplifies the process of defining Help panels, so that programming skills aren't required	Information developers can create the type of Help panels that are most likely to increase productivity; programmers can easily incorporate the panels into applications
Online Command Reference	Creates an electronic "book" of contextual Help, including a table of contents, topic pages and an index	By using the application "pull-downs," a user can quickly gather and save information in order to reduce training time and boost productivity
High-Performance File System	Facilitates efficient management of large disk media; supports files and disk partitions up to 2 gigabytes	Improved fixed disk performance; compatibility with existing files
Dialog Manager	Provides a high-level interface to OS/2 Presentation Manager in the OS/2 Programming Tools and Information Version 1.2	Helps programmers develop applications with easy-to-use, menu-based features
High-level programming interface	Provides application developers with a consistent interface across all versions of OS/2; the Presentation Manager programming interface implements elements of SAA and includes functions for windowing, graphics, fonts, clipboard and device-independent I/O support	Consistent platform for application development across versions of OS/2; foundation for applications on other IBM operating systems and hardware through Common User Access; capability for programmers to more easily extend programs by concentrating on specific functions
Enhanced ease-of-use facilities	Offer comprehensive Help information, descriptive system messages, and menu access to such facilities as installation aid, print spooler, enhanced window-based system editor, and file system application	Quicker learning for computer novices; simplified operations for beginners and experienced users alike
Presentation Manager windowing	Provides ease of use through Common User Access, a consistent windowing interface; multiple concurrent applications through onscreen windows; comprehensive Help information and system messages	Improved productivity, greater transfer of skills, quicker learning for novices, simplified operations for beginners and experienced users, easy switching among applications
Typographical text	Supports proportional spacing and fonts, multiple fonts and font creation	Easy-to-read text; higher productivity
DOS compatibility	Includes a DOS environment that allows most existing DOS applications to run unchanged; provides compatible file and command systems	Protection for investment in DOS applications; smooth transition from DOS to OS/2 from File Manager and Desktop Manager; interchangeable DOS and OS/2 files
Dual boot	Allows the choice of booting either DOS or OS/2 from the same fixed disk	An optional method of running DOS applications from an OS/2 system
File Manager	Graphical interface includes new iconic representations and provides file access via mouse or keyboard	Eliminates complex commands; speeds file access and manipulation
Graphic support	Allows applications to create and alter bit-mapped or vector graphics onscreen	Easily available graphics for all applications
Clipboard	Enables cut-and-paste between programs	Capability to move text and graphics among applications such as spreadsheets, word processors and data bases
16Mb addressable random access memory support	Enables developers/users to take full advantage of memory beyond 640Kb for applications and data	Capability to process large amounts of data with functionally rich applications such as spreadsheets and advanced word processing programs
Concurrent processing of multiple applications	Allows multitasking and fast, easy switching among OS/2 applications and/or DOS applications	Increased productivity and user convenience
Warranty and service	Include three-month warranty coverage and a 12-month service plan; an interactive, electronic device support facility is available to registered OS/2 service coordinators without charge	Protection for investment in OS/2; increased reliability, availability and serviceability

Graphics and windowing tools such as a font editor, an icon editor, a dialog editor, and a resource compiler.

Programmer's information for comprehensive documentation of OS/2 in hard copy and online format.

Programming facilities for creating dynamic link libraries, family applications, and more.

Programming aids for IBM Macro Assembler/2, C/2, COBOL/2 and FORTRAN/2.

Information Presentation Facility, which allows applications developers to define Help panels and a variety of built-in functions. Non-expert users can use the facility to create the type of online support they need. Programmers can later integrate that support into applications.

Sample programs illustrating useful techniques for working in the OS/2 environment.

What you get

IBM Operating System/2 Standard Edition Version 1.2 comes on 3.5-inch or 5.25-inch diskettes with associated publications.

Warranty/Service

IBM Operating System/2 Standard Edition Version 1.2 is developed to meet IBM's high standards of quality and reliability.

OS/2 Standard Edition Version 1.2 is backed by an enhanced warranty and service plan. The three-month warranty starts when the product is purchased, and covers both the media and the program. The no-charge service plan is available for up to 12 months after general availability.

IBM Operating System/2 at a glance

	Standard Edition Version 1.2	Extended Edition Version 1.2
Addressable memory	16Mb	16Mb
Multitasking	Concurrent processing; fast, easy switching among applications	
Enhanced file support	Files and partitions of up to 2 gigabytes using the optional High-Performance File System	
Presentation Manager	Built-in windowing, graphics and clipboard functions; Common User Access	
Database Manager	Relational data base with query management, report generation and additional functions	
Communications Manager	Support for a variety of multiple, concurrent communications sessions	
Procedures Language 2/REXX	A general-purpose interpretive command language	
Ease-of-use facilities	Online tutorial, contextual Help, onscreen messages, Desktop Manager, File Manager, Print Manager	
Languages supported	IBM COBOL/2, FORTRAN/2, C/2, Macro Assembler/2, Pascal Compiler/2, BASIC Compiler/2	
Systems	IBM Personal System/2 Model 30 286 and above; Personal Computer AT® and Personal Computer XT™ 286 systems	
Warranty and service	Three-month warranty coverage and a 12-month plan; an interactive, electronic service support facility is available to OS/2 registered service coordinators without charge	

™ Operating System/2, Systems Application Architecture, SAA, Presentation Manager, System/370, AS/400 and Personal Computer XT are trademarks of International Business Machines Corporation. 80386 and i486 are trademarks of Intel Corporation. © IBM, Personal System/2, OS/2 and Personal Computer AT are registered trademarks of International Business Machines Corporation.



© IBM Corp. 1989
International Business Machines Corporation
US Marketing & Services
Dept. ZW1
1133 Westchester Avenue
White Plains, NY 10604

Printed in the United States of America
9-89
All Rights Reserved

References in this publication to IBM products or services do not imply that IBM intends to make them available outside the United States.



G360-2735-04