



OOodi

Dictionary Installer for Unix
Jonathan Hudson
<http://ooodi.sourceforge.net>

Overview

OOodi provides a dictionary installer for OpenOffice.org on Unix platforms. The program is written and tested on Linux but should be portable to other Unix platforms.

OOodi will download a file describing available dictionaries (available.lst) from the OOo Dictionary Site (or your choice of alternate site) and allow the user to select dictionaries to be installed. For OpenOffice.org v1.0, dictionaries are installed in the user's private directory. OpenOffice.org v1.0.1 and later allow a privileged user (root) to install shared dictionaries in the system wide OpenOffice.org directory.

For OpenOffice.org v1.0.1 and later, hyphenation dictionaries are also supported by Ooodi.

Installation

Ooodi is provided (by the author) in two forms, either as a source archive or a Linux binary archive.

Source Archive

The source archive has numerous dependencies, including:

- GTK2+. The includes dependent libraries (atk, pango etc).
- libcurl. You are advised to use libcurl 7.9.5 or later.
- libpopt

To build and install the source distribution, unpack the archive to a suitable location, then:

```
./configure
```

```
make
make install (as root)
```

Binary Installation

In the unlikely event that a pre-compiled binary was available, it would be provided as an epm ([Easy Package Manager](#)) package. It would have the binary dependencies, which may be summarised as XFree 4.4.0 / X.org 6.7 and GTK2+ (similar to those below). Your mileage may vary:

```
libgthread-2.0.so.0 => /usr/local/lib/libgthread-2.0.so.0 (0x40036000)
libglade-2.0.so.0 => /usr/local/lib/libglade-2.0.so.0 (0x4003b000)
libgtk-x11-2.0.so.0 => /usr/local/lib/libgtk-x11-2.0.so.0 (0x4004d000)
libxml2.so.2 => /usr/local/lib/libxml2.so.2 (0x40302000)
libpthread.so.0 => /lib/libpthread.so.0 (0x403fa000)
libz.so.1 => /usr/local/lib/libz.so.1 (0x4044a000)
libgdk-x11-2.0.so.0 => /usr/local/lib/libgdk-x11-2.0.so.0 (0x4045b000)
libatk-1.0.so.0 => /usr/local/lib/libatk-1.0.so.0 (0x404d9000)
libgdk_pixbuf-2.0.so.0 => /usr/local/lib/libgdk_pixbuf-2.0.so.0 (0x404f3000)
libm.so.6 => /lib/libm.so.6 (0x40509000)
libpangoxft-1.0.so.0 => /usr/local/lib/libpangoxft-1.0.so.0 (0x4052c000)
libpangox-1.0.so.0 => /usr/local/lib/libpangox-1.0.so.0 (0x4054d000)
libpango-1.0.so.0 => /usr/local/lib/libpango-1.0.so.0 (0x4055a000)
libgobject-2.0.so.0 => /usr/local/lib/libgobject-2.0.so.0 (0x4058e000)
libgmodule-2.0.so.0 => /usr/local/lib/libgmodule-2.0.so.0 (0x405b9000)
libdl.so.2 => /lib/libdl.so.2 (0x405bc000)
libglib-2.0.so.0 => /usr/local/lib/libglib-2.0.so.0 (0x405bf000)
libcurl.so.2 => /usr/local/lib/libcurl.so.2 (0x4061a000)
libssl.so.0.9.7 => /usr/local/lib/libssl.so.0.9.7 (0x4064a000)
libcrypto.so.0.9.7 => /usr/local/lib/libcrypto.so.0.9.7 (0x40679000)
libpopt.so.0 => /usr/local/lib/libpopt.so.0 (0x4076b000)
libc.so.6 => /lib/libc.so.6 (0x40773000)
libX11.so.6 => /usr/X11R6/lib/libX11.so.6 (0x408a5000)
/lib/ld-linux.so.2 => /lib/ld-linux.so.2 (0x40000000)
libXrandr.so.2 => /usr/X11R6/lib/libXrandr.so.2 (0x4096e000)
libXext.so.6 => /usr/X11R6/lib/libXext.so.6 (0x40973000)
libXft.so.2 => /usr/local/lib/libXft.so.2 (0x40981000)
libXrender.so.1 => /usr/local/lib/libXrender.so.1 (0x40993000)
libfontconfig.so.1 => /usr/local/lib/libfontconfig.so.1 (0x4099b000)
libfreetype.so.6 => /usr/local/lib/libfreetype.so.6 (0x409bd000)
libexpat.so.0 => /usr/local/lib/libexpat.so.0 (0x40a0e000)
```

Note that from v0.68, libglade is required for the user interface.

Pre-compiled binaries are only guaranteed to work on my machines. The Intel build is prefixed on /usr/local while the PPC build is prefixed on /usr.

Performing an installation

epm ([Easy Package Manager](#)) is used to create all binary distribution formats. To install the portable distribution:

- Unpack the archive in a scratch directory (/tmp for example).

```
tar -xzf oodi-0.60-i386-linux.tar.gz -C /tmp/
```

- A root, run the script /tmp/oodi.install. variant).

```
# /tmp/oodi.install
```

- To bypass the Are you sure/do you accept this licence questions, use:

```
# /tmp/ooodi.install now
```

- A script to remove the software is also installed (/etc/software/ooodi.remove).

From time to time, some kind person will provide a .deb or .rpm distribution. I do not make these formats as I usually get it wrong and upset users.

To install the .deb or .rpm distributions, use the standard tools on your system.

Program dependencies

[OOodi](#) uses the InfoZip **unzip** program to unpack dictionary archives. **unzip** is usually supplied as part of a Linux distribution and is available for most commercial UNIXs. InfoZip may be downloaded, if required, from the [InfoZip web site](#).

Configuration

The first time it runs, [OOodi](#) creates a directory ~/.ooodi. It writes a (hidden) gtkrc file (.gtkrc) in this directory, which defines the fonts and sizes used for some labels for Western European fonts. [OOodi](#) is internationalised; translations are available for French, German, Greek, Italian and Japanese. Contributions of language files for other languages are welcome.

A file ~/.ooodi/ooodi.rc is also used. This file is maintained by the [Preferences](#) page. It allows, inter-alia the use of an HTTP proxy, if required (and a proxy user name).

The [Preferences](#) page is available from a right mouse popup menu, the [Settings->Preferences](#) menu or at startup if the available.lst file is not found.

From version 0.51, a menu bar is implemented. The menu options are essentially those available from the popup menu, with the addition of the [Repair](#), [Update Dictionary List](#), [Copy old version](#), and [Help](#) entries.

Usage

Getting Started

[OOodi](#) is invoked by the command **OOodi** (note capitalisation is significant, but a symbolic link to **ooodi** is installed). When invoked by a unprivileged user, it can install and remove dictionaries from that user's private directory. If the user has write access to the system-wide shared dictionary area (for [OpenOffice.org](#) v1.0.1), then the user may install or remove system wide shared dictionaries. The root user may invoke [OOodi](#) with an additional option to allow installation and removal of shared dictionaries even if the root user does not have a personal [OpenOffice.org](#) installation (see [here](#) for further details). If the root invokes the program without the option, the a file selector is displayed to locate the installation directory.

```
$ 00odi [--base=directory]
```

The `--base=dir` option is only available to the root user and defines where OpenOffice.org installation directory for (see [shared dictionaries](#)).

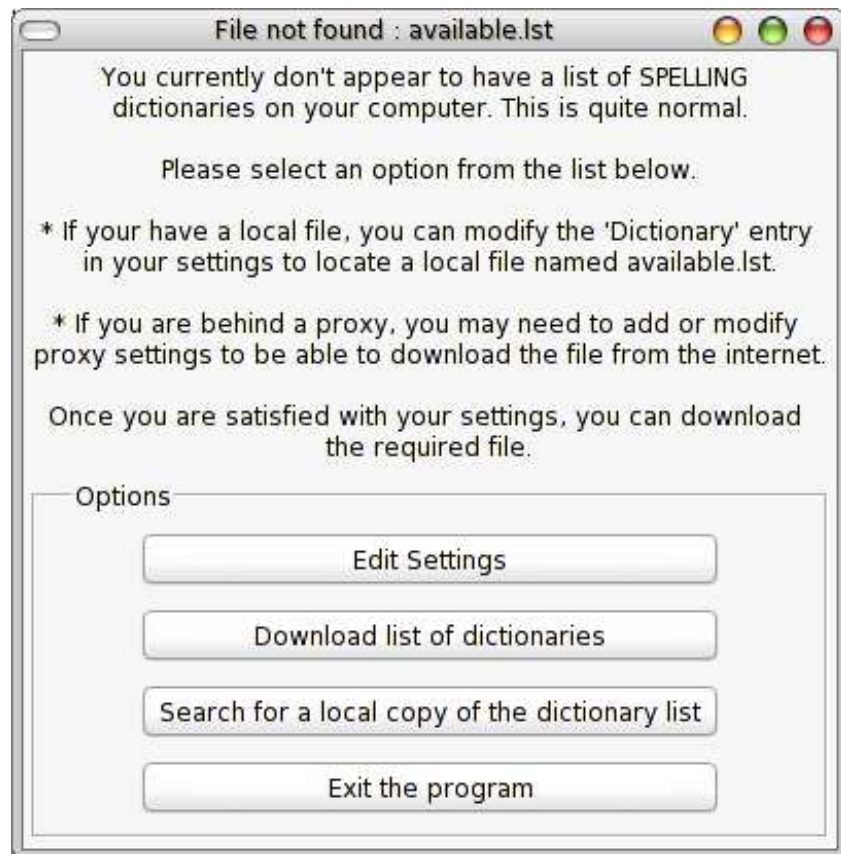
Normally, [OOodi](#) is invoked as:

```
$ 00odi
```

If a file defining the available dictionaries is available in the source directory defined by your preferences (or the current directory if you haven't defined a source directory), then the opening window is displayed, listing the available dictionaries and the user (U) and shared (S) dictionaries installed (indicated by a green tick). The final column in the list annotates the type of dictionary, either Dict for a spelling dictionary, or Hyph for a hyphenation dictionary. Hyphenation dictionaries are only included if the [Include hyphenation dictionaries](#) preference is set. An asterisk after the type indicates that a more recent dictionary is available for download. The check is accessed from the [Tools->Update Dictionary List](#) menu option.



If a local `available.lst` file is not found, then the user is presented with a number of options:



Edit Settings

Before you attempt to download a list of available dictionaries from the Internet, you may wish to edit your network options. Selecting this item will invoke the [Preferences](#) dialogue.

Download list of dictionaries

This option will attempt to download the list of available dictionaries from [OOo Dictionary Site](#) (or the URI entry in your [preferences](#)).

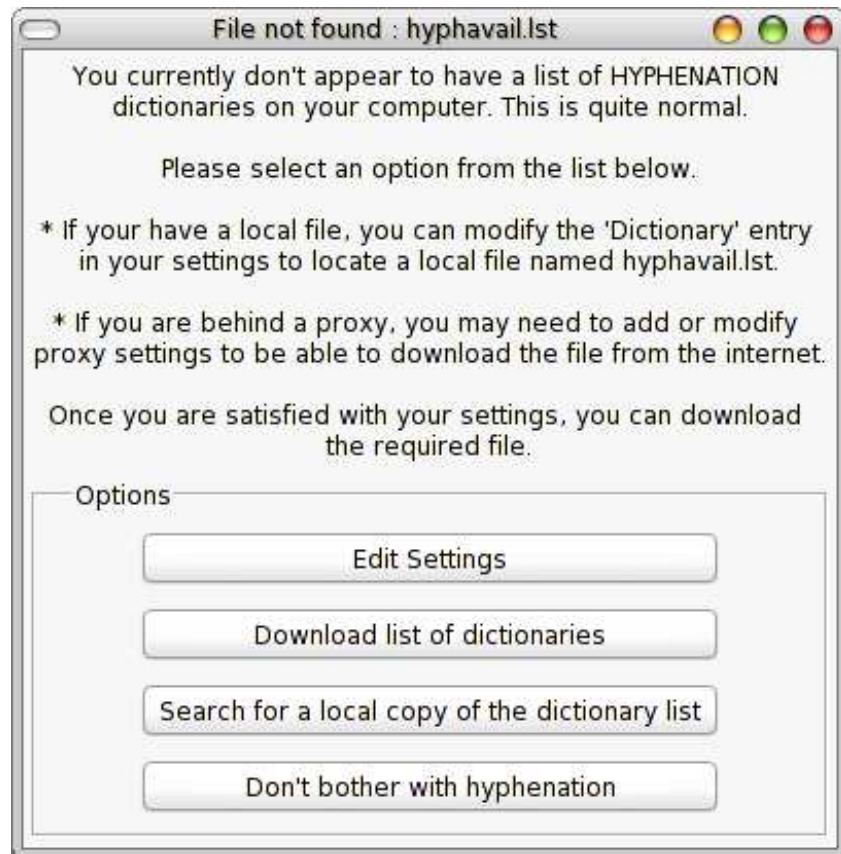
Search for a local copy of the dictionary list

This option will display the GTK+ file selection window. You can select an existing `available.lst` in a different directory. The program enforces a restriction that the file must be named `available.lst` and must be readable by you.

Exit the program

Just in case it all gets too much!

If the [Include hyphenation dictionaries](#) preference is set, but the `hyphavail.lst` file is not found, then a similar dialogue is displayed. In this case it is possible to continue without using hyphenation dictionaries. The file selector will require `hyphavail.lst`.



Preferences

Preferences are accessed either from the startup options, the [Settings->Preferences](#) menu or from a right mouse button popup menu.



URI

The address of the site holding the dictionary list and available dictionaries. The default is set to

<http://ftp.services.openoffice.org/pub/OpenOffice.org/contrib/dictionaries/>.

You should only change this if the dictionary site changes or you know better.

You may also find dictionary files at one or more of <http://dict.progbits.com> and <ftp://dicts.stardiv.de>.

Browser

[OOodi](#) uses a browser to display its help pages. The browser will also be invoked for the link from the **About** box to the [OOodi](#) home page. If you don't define a browser, [OOodi](#) attempts to locate and use one of firebird, galeon, mozilla or netscape, in that order.

Proxy

If there is a proxy between you and the Internet, then you should enter the proxy details here.

Proxy User

If you are behind a proxy and you have to supply a user name (and password) to access the proxy, then you should enter the user name here. You will be prompted for the password when you attempt to download information. [OOodi](#) does not store your password.

Keep zip files

If this option is checked, then the downloaded zip files containing dictionary data files are retained in the [Directory](#). This enables the installer to reinstall such dictionaries without having to download them again if [Prefer local files](#) is checked.


Prefer local files

If this option is checked, then [OOodi](#) will attempt to use local zip files containing dictionary data before downloading such files from the Internet. [OOodi](#) expects to find such files in the [Directory](#) (or current directory if the [Directory](#) is undefined).

Directory

The directory in which [OOodi](#) stores the list of available dictionaries and downloaded zip files containing dictionary data. Note that the zip files are only retained if the checkbox [Keep zip files](#) is checked. If zip files are retained, they can be reinstalled again if the [Prefer local files](#) entry is checked. The first time the program is run, this directory is set to \$HOME/.ooodi.

The Directory can be changed by clicking on the ellipsis (...). A file selector will be displayed allowing the user to choose an alternate directory.

-  After the initial list of dictionaries has been downloaded, [OOodi](#) will attempt to use this local dictionary list. If you want a new dictionary list, just delete the `available.lst` (and/or) `hyphavail.lst` file(s). The next time you run [OOodi](#) it will download new lists. Alternatively, you can use the [Update Dictionary List](#) menu option to check that your local files are current.

Include hyphenation dictionaries

If this option is checked, [OOodi](#) will also maintain [OpenOffice.org](#) v1.0.1 hyphenation dictionaries and will expect to find or download a list of available hyphenation dictionaries (`hyphavail.lst`).

Remove also unlinks

If this option is checked, then when you remove dictionary entries, the data files `*.dic` and `*.aff` are also deleted. This will prevent the [Repair](#) menu option from being able to rebuild your installed dictionary list from the data files.

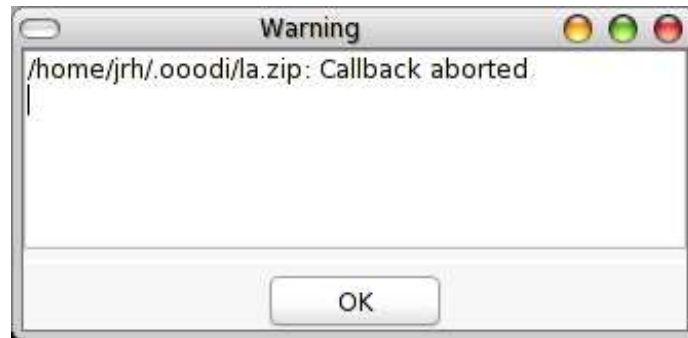
Installing and Removing Dictionaries

Once the list of available dictionaries is displayed, dictionaries may be selected for installation or removal. Once items have been selected, the **Install** and **Remove** buttons are available if you have a local [OOodi](#) installation. If you are running [OpenOffice.org](#) v1.01 or later and have write access to the shared dictionary directory, then the **Install Shared** and **Remove Shared** buttons are also available.



Dictionaries may be installed or deleted by pressing the appropriate button. If necessary, the dictionary file will be downloaded from the Internet. In this case, the file name and progress will be shown in the status bar, and the **Cancel D/L** button is enabled. The screen-shot illustrates the a user installing a 'user' dictionary.

If you cancel a download or errors occur, a dialogue will be displayed.



Shared Dictionaries

Shared dictionaries may be installed either by:

- A user with a current OpenOffice.org installation in their home directory and write access to the shared dictionary area. A symbolic link from the user area is followed to determine the shared dictionary area.
- The root user. As root is unlikely to have a local OpenOffice.org installation, a file requester is displayed enabling root to define the base of the OpenOffice.org installation (as the `--base=dir` [command line option](#)).

Menu Options

A number of options are available only from the menus.

Tools->Repair.

If you have not checked the [Remove also unlinks](#) preferences item, then selecting the Repair option will rebuild your list of installed dictionaries from any dictionary data files it finds in the user dictionary area.

Tools->Copy old version.

This option will merge the user dictionary entries from compatible (i.e. OpenOffice.org v641 and later) versions into your current user dictionaries.

The list of old versions is displayed in a combo box. Choose the version required and press **OK**. If no compatible versions are found, then this item is not available.



Tools->Update Dictionary List.

This option will cause [OOodi](#) to perform the following checks:

- Verify that the local file `available.lst` is current. If it is not, then download the latest version from [OOo Dictionary Site](#) (or the location set in preferences).
- If [Include hyphenation dictionaries](#) is checked, verify that the local file `hyphavail.lst` is current. If it is not, then download the latest version from [OOo Dictionary Site](#) (or the location set in preferences).
- For each currently installed dictionary, verify that the dictionary is current. This is done by firstly checking the local zip files against the latest version from [OOo Dictionary Site](#) (or the location set in preferences), or if a local file is not available, checking the installed dictionary `*.dic` file. Note that checking the local dictionary file is likely to give false positives, as the contents from the zip files will necessarily be older than the zip file itself. In order to mitigate this, an arbitrary offset of one week is applied to the dictionary file date.

Help->Help.

This option will invoke your [browser](#) to display this document.

Diagnostics

When **Install** is clicked, the program (attempts to) download the selected dictionaries from [OOo Dictionary Site](#). The download is checked for a ZIP signature. If the file is a zip file, then the `.dic` and `.aff` files are installed under `user/wordbook` and `dictionary.lst` is updated. If the file is not a valid zip file, then the file is preserved as `xx_XX.zip.failed`. This may contain a HTTP or proxy error message. Likewise, if the program repeated fails to download a valid list of available dictionaries, then the `available.lst` file may contain a HTTP or proxy error message.

Selecting Dictionaries in [OpenOffice.org](#)

This is the quick explanation of how to use your newly installed dictionaries in [OpenOffice.org](#). If you want a better explanation, then you should read Lee Corbin's [document](#) from the Windows [DictInstaller](#) project.

1. Download all required dictionaries using [OOodi](#)
2. If you're using the QuickStarter, then disable it
3. Select Tools / Options / Language Settings / Writing Aids
4. Select Edit
5. Select from the Language pulldown list. The downloaded dictionaries have an 'ABC' logo next to them. Check the 'OpenOffice MySpell Spellchecker' box.
6. Select Close
7. Select Languages. Ensure the correct 'Default Language for Documents' is shown.
8. Select OK
9. Restart [OpenOffice.org](#) (or re-enable the QuickStarter). Enjoy spell checking.

Bugs and Omissions

The program cannot distinguish between two different dictionaries where the locale code is the same (el_GR and el_GR_enhanced and it_IT and it_IT_latin). Fixing this in [OOodi](#) would be quite ugly. As [OpenOffice.org](#) v1.01 will allow multiple dictionaries for a given locale, then hopefully the names in the dictionary distributions will be modified to make this problem go away.

Author, Licence and Thanks

[OOodi](#) is (c) Jonathan Hudson <jrh@openoffice.org> 2002-2004. This software is released under the LGPL (please see the file COPYING included with the source archive for further information).

Mark Finlay improved the user interface.

Bug reports, translations and change requests are welcomed. I am grateful to Marco Huggenberger (de_DE), Takeshi Aihana (ja_JP), Michalis Kabrianis (el_GR), Andrea Sanavia (it_IT), Andre Mazouer (fr_FR), Tamas Gervai (hu_HU), Pedro A. Gracia Fajardo (es_ES) and Вячеслав Диконов (aka Vyacheslav Dikonov) (ru_RU) for their translations. Any omissions are entirely mine as [OOodi](#) has been something of a moving target.

Johannes Jördens <jojor@gmx.de> has made Debian packages for 0.55.

The template for this document is derived from one produced by Daniel Carrera <dcarrera@openoffice.org> for the [OpenOffice.org Starter's Guide](#).

8. Links to other [OpenOffice.org](#) stuff

<http://ooodi.sourceforge.net>. OOodi home page.

<http://www.openoffice.org>. The main OfficeOffice.org site.

<http://evolvedoo.dyndns.org>. Evolved OpenOffice.org aims to bring together as much third party work as possible into one easy to use pre-compiled package for Linux Desktops. Includes RPMs for GNOME and KDE providing QuickStart applications, OOodi, icons, integration into GNOME and KDE control centres.

<http://www.ooodocs.org>. OOoDocs provides news, HOWTOs and the Windows Dictionary Installer.

<http://ooextras.sourceforge.net>. OOExtras provides a community repository for third party templates, macros, and a clip art image library.

<http://oogstart.sourceforge.net>. Quickstart applet for GNOME (oogstart).

<http://segfaultskde.berlios.de/index.php?content=ooogs>. Quickstart applet for KDE (ooqs).

[OOo Dictionary Site](#). Dictionary files and documentation, maintained by Richard Holt and Kevin Hendricks.

<http://www.ooodocs.org/dictinstall>. Dictionary Installer for Microsoft Windows.

[OpenOffice.org Starter's Guide](#). This project provides high quality starter guide documentation for [OpenOffice.org](#).

FAQ

If there are frequently (asked|answered) questions, they may be found here.

Where are the Debian or RedHat packages?

I don't know. I use neither Debian nor Redhat, excellent as they are. If I make files using the EPM tools. I get chastised by Debian/Redhat fanatics because the results don't comply precisely with the vendors' standards. So, alas, I can't offer such packages. Please ask you local, friendly distribution maintainer.

How do I select more than one spelling dictionary or hyphenation dictionary?

CONTROL+click and/or SHIFT+click.

When I download the (insert your example here) file, I get a '.failed' file. Why is the download offered by OOodi if the file doesn't exist?

Probably because your `available.lst` or `hyphavail.lst` files are out of sync with the files on the remote server. Use the Tools->Update Dictionary List option to update these files (and see what's changed). Note also that the detection of changed files is somewhat rudimentary, so it might be best to delete the `$HOME/.ooodi/available.lst` and `$HOME/.ooodi/hyphavail.lst` files first to ensure you have the latest versions.